

# RCS & RCD

**MOUNTING CLAMPS SINGLE**  
**MOUNTING CLAMPS DOUBLE**



RCS Series - Single (left) and RCD Series - Double (right)

### RECOMMENDED FOR:

Fast, economic and safe mounting of hydraulic hose and hydraulic tube onto machinery and steelwork. The jaws of the clamp grip the hose or tube to reduce vibration, and help absorb noise and shocks.

### ORDERING DETAILS:

#### ORDER AS COMPLETE CLAMPS:

**RCSD** and **RCDD** are packs of 5 complete clamps. ("D" is added after RCS and RCD, for example RCSD-06 is a pack of components for 5 complete RCS-06 clamps.) Complete Clamps are supplied unassembled.

#### ORDER AS INDIVIDUAL COMPONENTS:

Standard Pack Size for Components is 50 pieces for Groups 1 to 3, and 25 pieces for Groups 4 and 5.

### SIZE SELECTION:

**RCS** Series Clamps are available with nominal diameters from 6 mm to 50,8 mm, **RCD** Series Clamps are available with nominal diameters from 6 mm to 42 mm. The Nominal Diameter Size of the Clamp is the minimum diameter range of the Clamp, for example, a 20 mm clamp suits Outside Diameters from 20,0 mm up to 21,9 mm. After assembly, the two Jaw halves of a correctly chosen Clamp should not contact each other.

### TECHNICAL DATA

#### SPECIFICATION:

RCS and RCD Series Mounting Clamps comply with Specification DIN 3015.

#### OPERATING TEMPERATURE:

From -30°C to +90°C (-22°F to +194°F).

#### MATERIALS:

##### Bottom Plate:

Steel, zinc plated and passivated (CrVI free).

##### Jaws:

Green, polypropylene. Upper and lower jaws are identical, and size is moulded into each half. Black, self-extinguishing polyamide jaws, are available on request.

##### Top Plate:

Steel, zinc plated and passivated (CrVI free).

##### Bolts:

Steel, plated.

##### Rails:

Steel, unplated.

##### Rail Nuts:

Aluminium.

##### Stacking Plates:

Steel, zinc plated and passivated (CrVI free).

INTRODUCTION

HOSE

COUPLINGS

ADAPTORS

ACCESSORIES

FILTERS

TECHNICAL

# ACCESSORIES

## RCS AND RCD MOUNTING CLAMPS - ASSEMBLY INSTRUCTIONS

### ASSEMBLY INSTRUCTIONS

#### ASSEMBLY WITH BOTTOM PLATE.

Weld metal Bottom Plate in position. (Do not weld with Polypropylene Jaws in place). Position lower half of Jaws on Bottom Plate. Insert Hose or Tube. Position upper half of Jaws over Hose or Tube and secure in place with Top Plate and Bolt(s).

Clamps should be positioned both before and after bends, as near as possible to the bend.

#### ASSEMBLY WITH MOUNTING RAIL

Mounting Rail is available in lengths of 2 metres, and in three different heights. Mounting Rail can be welded on, or screwed on. Insert Rail Nut(s) into Mounting Rail, and when located in the correct position, twist Rail Nut in clockwise direction to lock it in place.

Then mount lower half of Jaws onto Rail Nut, insert Hose or Tube and position upper half of Jaws; secure in place with Top Plate and Bolt(s).

Clamps should be positioned both before and after bends, as near as possible to the bend.

#### ASSEMBLY WITH STACKING COMPONENTS

Fasten Bottom Plate or Mounting Rail & Rail Nuts. Position lower half of Jaws; then Hose or Tube; and then upper half of Jaws. Secure in place with Stacking Bolt(s), ensuring the extended hex of Stacking Bolt(s) protrudes above upper half of Jaws. Stacking Plate is then placed over Stacking Bolt(s) to prevent the Bolt(s) turning. The next Mounting Clamp can then be mounted on top of first clamp.

RCS Single Clamps must be of the same Group to be stacked on top of each other. RCD Double Clamps of different Groups of Groups 2 to 5 can be stacked. RCD Double Group 1 Clamps can only be stacked on other Double Group 1 Clamps.

Clamps should be positioned both before and after bends, as near as possible to the bend.

### MOUNTING

Standard mounting is Weld On Bottom Plate. Can also be rail mounted, and can be stacked vertically on top of each other. For Groups 1-3 of RCS Series Single Clamps; Double Bottom Plates and Multiple Bottom Plates allow mounting of more than one Clamp on a common bottom plate.

### RECOMMENDED SPACING AND BOLT TORQUE

RECOMMENDED SPACING	
CLAMP	MAXIMUM DISTANCE BETWEEN CLAMPS
mm	mm
6 to 14	900
15 to 22	1200
23 to 28	1500
30 to 38	2000
40 to 48,3	2500
50 to 57	3000

RECOMMENDED BOLT TORQUE				
SERIES		BOLT SIZE	TORQUE SETTINGS	
			Nm	ft.lbf
RCS Series Single Clamps	All Groups	M6	8	6
RCD Series Double Clamps	Group 1	M6	5	4
RCD Series Double Clamps	Group 2-4	M8	12	9
RCD Series Double Clamps	Group 5	M8	8	6

### RIBBED AND SMOOTH BORE JAWS

On the following pages, Part Numbers for Complete Claps and Jaws are for standard ribbed jaws. Smooth Bore jaws are also available; simply add S to the end of the Part Number.

#### EXAMPLE 1:

RCS-06S is Part Number for complete clamp with smooth jaws.

RCS-06JS is Part Number for smooth jaws pair.

#### EXAMPLE 2:

RCD-06S is Part Number for complete clamp with smooth jaws.

RCD-06JS is Part Number for smooth jaws pair.



STANDARD RIBBED JAW



SMOOTH BORE JAW

## RCS & RCD MOUNTING CLAMPS - HOSE COMPATIBILITY

### HOSE COMPATIBILITY

NOM CLAMP SIZE MM	SUITS HOSE TYPE & SIZE																										
	T3000A/D/S	T3600A/D/S	T4000A/D/S	T5000A/D/S	T6000A/D/S	H3000A/D/S	H4000A/D/S	H5000A/D/S	H6000A/D/S	H12A/D/S	R45HA/D	R4SPA/D	T1A/D/S	T2A/D/S	T1F	T2C	TXA2D	DF2A	E2	TJ2D	BT1	RQP1	RQP2	RQP5			
10	-4	-4	-4																								
12																											
12.7				-4	-4														-4			-4	-4		-4		
14	-5	-5																	5	-4	-4	-5			-5		
15	-6	-6	-5	-5	-5																		-5	-4			
16			-6	-6	-6														-6	-5		-6	-6	-5	-6		
18	-8	-8																			-6	-5					
19							-6	-6	-6	-6															-6	-8	
20			-8	-8	-8							-6	-8	-8	-8				-8	-8		-8	-8				
22	-10	-10	-10	-10			-8,-10	-8	-8	-8		-8	-10	-10	-10	-8	-8	-10				-10	-10	-8	-10		
25.4	-12	-12		-12				-10	-10	-10		-10	-12	-12					-10	-10	-12	-10		-12	-12	-10	-12
28			-12					-12	-12	-12											-12					-12	
30												-12	-12													-16	
32	-16	-16																									
35			-16					-16	-16	-16	-16	-16		-16	-16	-16	-16		-16	-16		-16	-16	-16			
38												-16														20	
42							-20	-20																		-24	

NOM CLAMP SIZE MM	SUITS HOSE TYPE & SIZE																								
	RQP6	T5	D2B	MS1000	CS1000	TW1	PW2	RTH1	SR	SRF	M1	MP1	M2	PL1	PL1D	M2G	FB2	TP7, TP7N	TP7T, TP7TN	TP8, TP8N	TP8T, TP8TN	TP3000	TPGL		
10								-4,-6												-3		-4	-4		-2
12																					-4	-4			-4
12.7	-4	-4									-4														
14	-5	-5									-5	-4	-4												
15	-6						-4	-8			-6														
16		-6				-6	-5					-6													
18				-8	-8			-10																	
19	-8	-8					-6																		
20						-8						-8													
22	-10	-10		-10	-10			-12					-8	-10	-10	-8	-8								-8
25.4	-12			-12	-12																				
28		-12						-16																	
30		-16							-12	-12															
32				-16	-16																				
35									-16	-16															
38		-20		-20	-20																				
42		-24	-24																						

**NOTE:** Above details are correct as at time of publication. Selection chart is intended as a guide for the selection of clamps; manufacturing tolerances may affect size selection. Size selection of clamp should be confirmed with the actual hose to be used.

INTRODUCTION

HOSE

COUPLINGS

ADAPTORS

ACCESSORIES

FILTERS

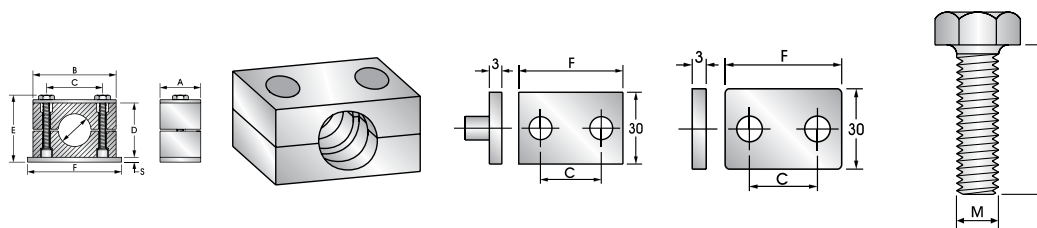
TECHNICAL

# ACCESSORIES

## RCS MOUNTING CLAMPS

RCS	RCS-J	RCS-PB	RCS-PT	RCS-BH
-----	-------	--------	--------	--------

### SINGLE CLAMPS



	NOMINAL CLAMP SIZE	COMPLETE CLAMP	JAWS (PAIR)	PLATE BOTTOM	PLATE TOP	BOX HEX (2 PER CLAMP)
GROUP 1	6	RCS-06	RCS-06J	RCS-1PB	RCS-1PT	RCS-1BH
	8	RCS-08	RCS-08J			
	10	RCS-10	RCS-10J			
	12	RCS-12	RCS-12J			
GROUP 2	12,7	RCS-127	RCS-127J	RCS-2PB	RCS-2PT	RCS-2BH
	14	RCS-14	RCS-14J			
	15	RCS-15	RCS-15J			
	16	RCS-16	RCS-16J			
	18	RCS-18	RCS-18J			
GROUP 3	19	RCS-19	RCS-19J	RCS-3PB	RCS-3PT	RCS-3BH
	20	RCS-20	RCS-20J			
	22	RCS-22	RCS-22J			
	25, 25,4	RCS-25, RCS-254	RCS-25J, RCS-254J			
GROUP 4	28	RCS-28	RCS-28J	RCS-4PB	RCS-4PT	RCS-4BH
	30	RCS-30	RCS-30J			
GROUP 5	32	RCS-32	RCS-32J	RCS-5PB	RCS-5PT	RCS-5BH
	35	RCS-35	RCS-35J			
	38	RCS-38	RCS-38J			
	42	RCS-42	RCS-42J			
GROUP 6	50,8	RCS-508	RCS-508J	RCS-6PB	RCS-6PT	RCS-6BH

### CLAMP DIMENSIONS

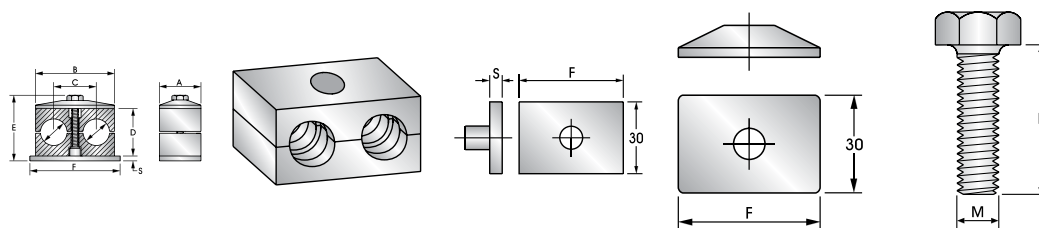
Clamps are divided into Groups 1 to 6. Within each Group, all components except the Jaws have the same size.

DIMENSIONS MM	A	B	C	D	E	F	S	BOLT M X L
GROUP 1	30	37	20	27	37	42	3	M6 x 30
GROUP 2	30	43	26	33	43	48	3	M6 x 35
GROUP 3	30	50	33	35	45	55	3	M6 x 40
GROUP 4	30	57	40	42	53	62	3	M6 x 45
GROUP 5	30	68	52	58	69	74	3	M6 x 60
GROUP 6	30	86	66	66	77	88	3	M6 X 70

## RCD MOUNTING CLAMPS

RCD	RCD-J	RCD-PB	RCD-PT	RCD-BH
-----	-------	--------	--------	--------

### DOUBLE CLAMPS



	NOMINAL CLAMP SIZE	COMPLETE CLAMP	JAWS (PAIR)	PLATE BOTTOM	PLATE TOP	BOX HEX (1 PER CLAMP)
<b>GROUP 1</b>	6-6 8-8 10-10 12-12	<b>RCD-06</b> <b>RCD-08</b> <b>RCD-10</b> <b>RCD-12</b>	<b>RCD-06J</b> <b>RCD-08J</b> <b>RCD-10J</b> <b>RCD-12J</b>	<b>RCD-1PB</b>	<b>RCD-1PT</b>	<b>RCD-1BH</b> (Use RCS-2BH)
<b>GROUP 2</b>	12,7- 12,7 14-14 15-15 16-16 18-18	<b>RCD-127</b> <b>RCD-14</b> <b>RCD-15</b> <b>RCD-16</b> <b>RCD-18</b>	<b>RCD-127J</b> <b>RCD-14J</b> <b>RCD-15J</b> <b>RCD-16J</b> <b>RCD-18J</b>	<b>RCD-2PB</b>	<b>RCD-2PT</b>	<b>RCD-2BH</b>
<b>GROUP 3</b>	19-19 20-20 22-22 25-25 25,4- 25,4	<b>RCD-19</b> <b>RCD-20</b> <b>RCD-22</b> <b>RCD-25</b> <b>RCD-254</b>	<b>RCD-19J</b> <b>RCD-20J</b> <b>RCD-22J</b> <b>RCD-25J</b> <b>RCD-254J</b>	<b>RCD-3PB</b>	<b>RCD-3PT</b>	<b>RCD-3BH</b>
<b>GROUP 4</b>	28-28 30-30	<b>RCD-28</b> <b>RCD-30</b>	<b>RCD-28J</b> <b>RCD-30J</b>	<b>RCD-4PB</b>	<b>RCD-4PT</b>	<b>RCD-4BH</b>
<b>GROUP 5</b>	32-32 35-35 38-38 42-42	<b>RCD-32</b> <b>RCD-35</b> <b>RCD-38</b> <b>RCD-42</b>	<b>RCD-32J</b> <b>RCD-35J</b> <b>RCD-38J</b> <b>RCD-42J</b>	<b>RCD-5PB</b>	<b>RCD-5PT</b>	<b>RCD-5BH</b>

### CLAMP DIMENSIONS

Clamps are divided into Groups 1 to 5. Within each Group, all components except the Jaws have the same size.

DIMENSIONS MM	A	B	C	D	E	F	S	BOLT M X L
<b>GROUP 1</b>	30	37	20	25	40	37	3	M6 x 30
<b>GROUP 2</b>	30	53	29	26	43	55	5	M8 x 35
<b>GROUP 3</b>	30	67	36	37	54	70	5	M8 x 45
<b>GROUP 4</b>	30	82	45	42	60	85	5	M8 x 50
<b>GROUP 5</b>	30	106	56	54	72	110	5	M8 x 60

INTRODUCTION

HOSE

COUPLINGS

ADAPTORS

ACCESSORIES

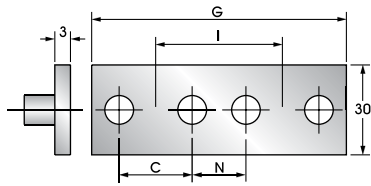
FILTERS

TECHNICAL

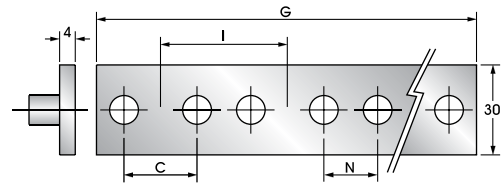
# ACCESSORIES

## RCS & RCD MOUNTING CLAMPS

### RCS-PD & RCS-PM RCS CLAMPS DOUBLE & MULTIPLE PLATE BOTTOM



RCS-PD



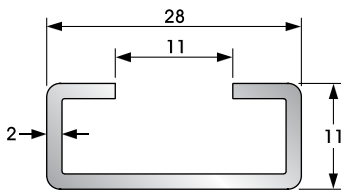
RCS-PM

### PART NUMBERS AND SPECIFICATIONS

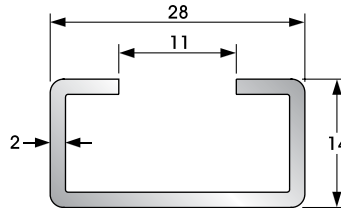
TO SUIT GROUP	DOUBLE BOTTOM PLATE FOR 2 CLAMPS	DIMENSIONS					MULTIPLE BOTTOM PLATE FOR 10 CLAMPS
		C	N	I	F	G	
<b>GROUP 1</b>	<b>PART NO</b>	<b>mm</b>	<b>mm</b>	<b>mm</b>	<b>mm</b>	<b>mm</b>	<b>PART NO</b>
	RCS-1PD	20	20	40	81	401	RCS-1PM
<b>GROUP 2</b>	RCS-2PD	26	18	44	91	443	RCS-2PM
<b>GROUP 3</b>	RCS-3PD	33	19	52	106	522	RCS-3PM

### RC-RAIL RAIL MOUNT COMPONENTS

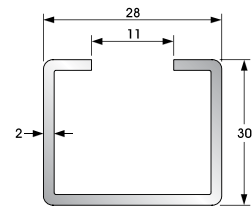
**RAIL** - supplied in 2 metre lengths. Suits **RCS** and **RCD** series clamps. Three different heights.



RC-RAIL-H11

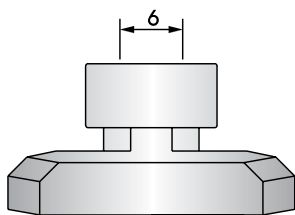


RC-RAIL-H14



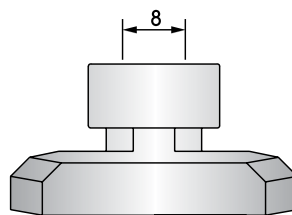
RC-RAIL-H30

### RC-RN RAIL NUTS



RC-RN-M6

M6 THREAD SUITS ALL RCS CLAMPS & RCD GROUP 1 CLAMPS

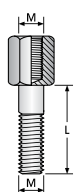


RC-RN-M8

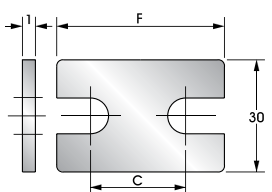
M8 THREAD SUITS RCD GROUPS 2 TO 5 CLAMPS



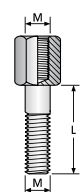
## RCS & RCD STACKING COMPONENTS



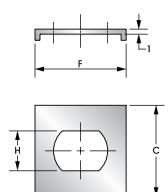
RCS-BS



RCS-PS



RCD-BS



RCD-PS

SINGLE CLAMP STACKING		SINGLE CLAMP PLATE STACKING		DOUBLE CLAMP BOLT STACKING		DOUBLE CLAMP PLATE STACKING	
	DIMENSIONS M X L		DIMENSIONS F X C		DIMENSIONS M X L		DIMENSIONS F X C X H
<b>PART NO</b>	<b>mm</b>	<b>PART NO</b>	<b>mm</b>	<b>PART NO</b>	<b>mm</b>	<b>PART NO</b>	<b>mm</b>
<b>RCS-1BS</b>	M6 x 20	<b>RCS-1PS</b>	34 x 20	<b>RCD-1BS</b>	M6 x 20	<b>RCD-1PS</b>	32 x 30 x 13
<b>RCS-2BS</b>	M6 x 25	<b>RCS-2PS</b>	40 x 26	<b>RCD-2BS</b>	M8 x 20	<b>RCD-2PS</b>	32 x 30 x 14
<b>RCS-3BS</b>	M6 x 30	<b>RCS-3PS</b>	48 x 33	<b>RCD-3BS</b>	M8 x 29	<b>USE RCD-2PS*</b>	32 x 30 x 14
<b>RCS-4BS</b>	M6 x 35	<b>RCS-4PS</b>	57 x 40	<b>RCD-4BS</b>	M8 x 34	<b>USE RCD-2PS*</b>	32 x 30 x 14
<b>RCS-5BS</b>	M6 x 50	<b>RCS-5PS</b>	68 x 52	<b>RCD-5BS</b>	M8 x 47	<b>USE RCD-2PS*</b>	32 x 30 x 14

**NOTE:** \*Group 2 Stacking Plate also suits Groups 3, 4 & 5.